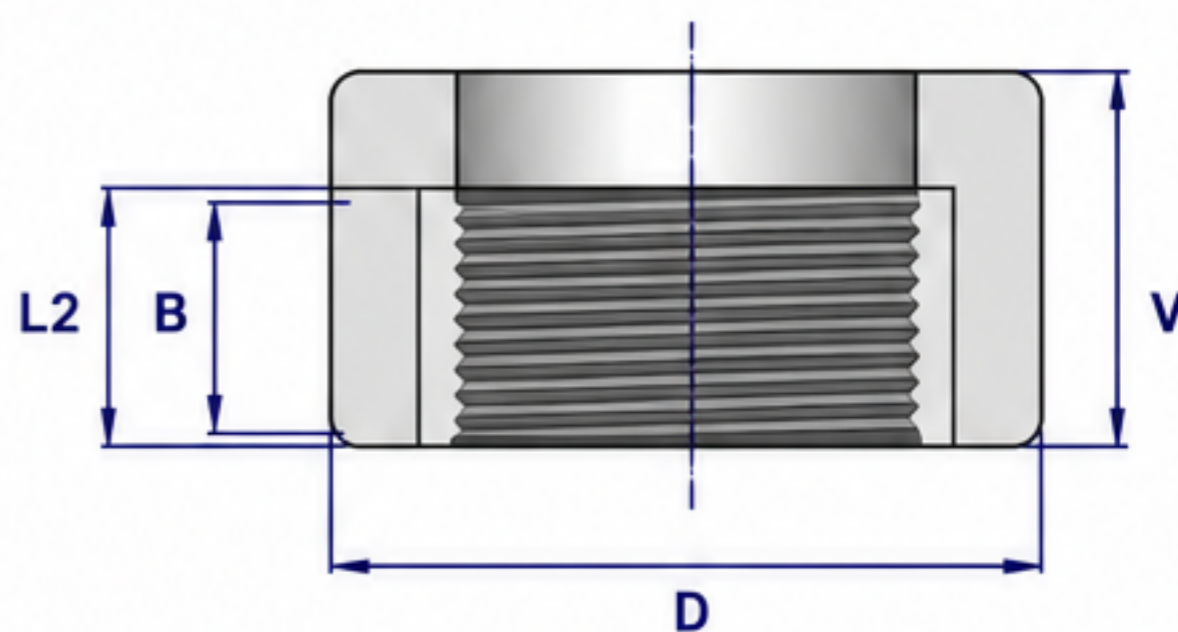


PÓŁMUFA GWINTOWANA

3000 lbs • 6000 lbs



DOSTĘPNE WYKONANIA:

Stal węglowa
Stal nierdzewna

3000 lbs

SIZE	V Min.	D Min.	B Min.	L2 Min.	Peso Kg./Cad. Weight Kg./Each
1/8"	16	16	6.4	6.7	0.030
1/4"	17.5	19	8.1	10.2	0.035
3/8"	19	22	9.1	10.4	0.040
1/2"	24	28	10.9	13.6	0.085
3/4"	25.5	35	12.7	13.9	0.115
1"	30	44	14.7	17.3	0.230
1 1/4"	33.5	57	17.0	18.0	0.400
1 1/2"	39.5	64	17.8	18.4	0.555
2"	43	76	19.0	19.2	0.750
2 1/2"	46	92	23.6	28.9	1.150
3"	54	108	25.9	30.5	1.750
4"	60.5	140	27.7	33.0	3.000

6000 lbs

SIZE	V Min.	D Min.	B Min.	L2 Min.	Peso Kg./Cad. Weight Kg./Each
1/8"	16	22	6.4	6.7	0.050
1/4"	17.5	25	8.1	10.2	0.060
3/8"	19	32	9.1	10.4	0.105
1/2"	24	38	10.9	13.6	0.175
3/4"	25.5	44	12.7	13.9	0.245
1"	30	57	14.7	17.3	0.540
1 1/4"	33.5	64	17.0	18.0	0.580
1 1/2"	39.5	76	17.8	18.4	0.980
2"	43	92	19.0	19.2	1.470
2 1/2"	46	108	23.6	28.9	2.100
3"	54	127	25.9	30.5	3.150
4"	60.5	159	27.7	33.0	5.200



UWAGA:

- Wymiary w milimetrach
- Wymiary zgodne z normą ANSI B 16.11
- Wagi orientacyjne



Produkty spełniają
wymagania normy
ANSI B 16.11



ATTENTION:

- Dimensions are in millimeters
- Dimensions in compliance with ANSI B 16.11
- Weights are approximate